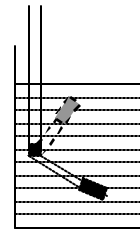
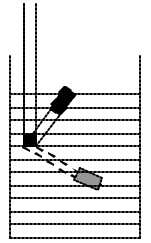


- **INSTRUCTIONS FOR INSTALLATION**

May be used for direct level control, in accordance with product electrical specifications. In the case of approved products, the ground wire will always be included and the ground wire sheath will always be green. In this case this two remaining wires are supplied for “high closure “or specific request,”low closure”.



FILLING



EMPTYING

- **ELECTRIC CONNECTIONS**

Use wires
“BLACK AND BLUE “
With these contacts the regulators
closes when down and **opens** when up.

Use wires
“BLACK AND BROWN
with these contacts the
regulator **closes** when up
and **open** when down.

- THE WIRE THAT IS NOT USED MUST BE CORRECTLY INSULATED.

- **INSTALLATION OF COUNTERWEIGHT**

1. Insert the cable in the counter weight from the conical part and rotate it. Thus causing the plastic ring inserted in the opening to become detached (if necessary this operation can be facilitated with the use of a screwdriver). The ring should then be positioned in the point where it is desired to block the counterweight.
2. Force the counterweight on the ring by using a slight pressure.

THE COUNTERWEIGHT IS FURNISHED ONLY ON REQUEST. AVOID JOINTS IN THE LEVELREGULATOR CABLE NEVER IMMERSE POSSIBLE CABLE JOINTS IN THE WATER.

TECHINICAL DATA:

Micro switch	: 10(8) 250V~10(4) 380V
Switch occurrence	: more than 50000 switch working tested VDE specifications.
Protection	: water proof
Max Temperature	: 70* C
Working Pressure	: Max. 1 Bar
Circuit breaking capacity	:directly 1 KW with 250V

For More Details contact

Navneet Bhardwaj
09810083638